

Protein name His-TEV-Kras(2-185) G12R

Cat. No.

Product information

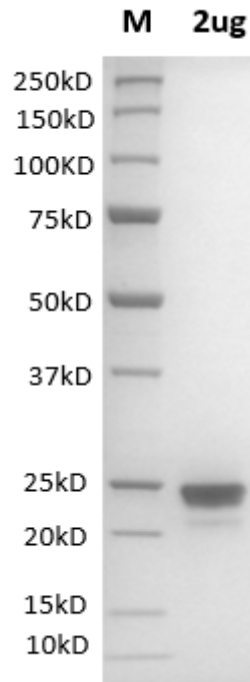
Nature	Recombinant
Expression system:	Escherichia coli
Concentration:	lot specific
Purity:	90% determined by SDS-PAGE
Species	Human
Extinction Coefficient:	13660
AA MW:	23360.44Da

Preparation and Storage

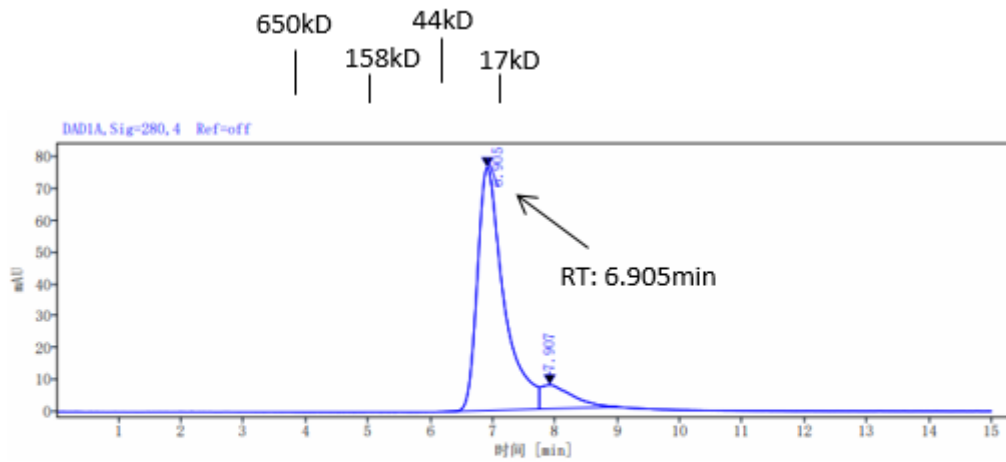
Format:	Aqueous buffer solution
Formulation:	20 mM HEPES pH 7.4, 150 mM NaCl, 0.5 mM MgCl ₂ , 1 mM TCEP
Storage and handling:	Store at -80°C. Avoid multiple freeze-thaw cycles.

Assay Data

SDS-PAGE



SEC-HPLC



Signal: DAD1A, Sig=280, 4 Ref=off

RT[min]	Width[min]	Area	Height	Area%
6.905	1.53	2253.88	76.44	89.57
7.907	1.25	262.47	7.49	10.43
SUM	2.78	2516.35		

- For Research Use Only. Not for use in diagnostic procedures.