

invotamab

Cat. No.

Product information

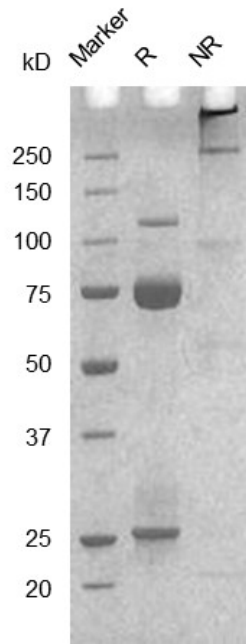
Isotype:	bispecific, hIgM
Source:	CHO stable pool
Extinction Coefficient:	1.282
AA MW:	977kD
Concentration:	lot specific
Purity:	>95% determined by SDS-PAGE >80% determined by SEC-HPLC
Endotoxin Level:	<1EU/mg determined by LAL method
Sterility:	0.2 μ M filtered

Formulation and Storage

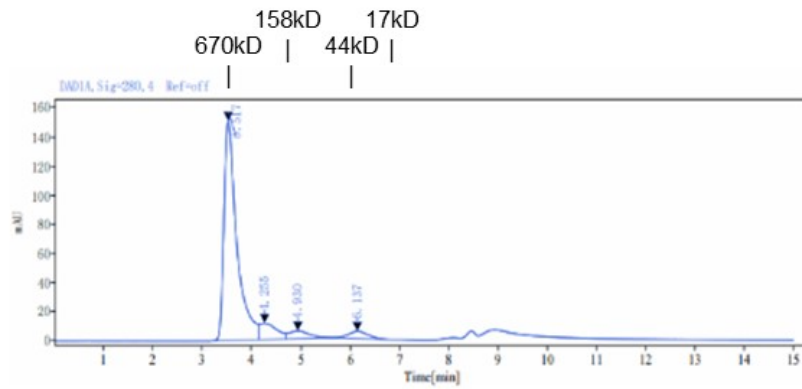
Formulation:	PBS, pH 7.4
Storage and handling:	Store at -80°C. Avoid multiple freeze-thaw cycles.

Assay Data

SDS-PAGE



SEC-HPLC



Signal: DAD1A, Sig-280, 4 Ref=off

Retention Time[min]	Peak Width[min]	Peak Area	Peak Height	Peak Area%	Name
3.517	1.04	2731.96	150.83	83.07	
4.255	0.56	271.66	11.14	8.26	
4.930	0.94	150.12	5.18	4.56	
6.137	1.17	134.99	4.80	4.10	
	SIM	3288.73			

- For Research Use Only. Not for use in diagnostic procedures.