

Avelumab

Cat. No.

Product information

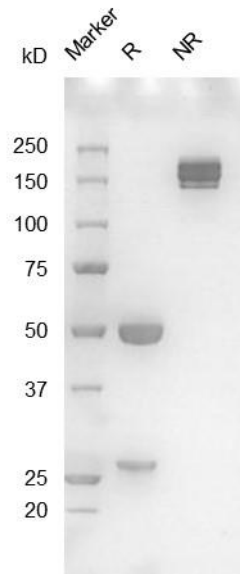
Isotype:	hIgG1
Source:	CHO-K1
Extinction Coefficient:	1.477
AA MW:	144kD
Concentration:	lot specific
Purity:	>95% determined by SDS-PAGE >95% determined by SEC-HPLC
Endotoxin Level:	<1EU/mg determined by LAL method
Sterility:	0.2µM filtered

Formulation and Storage

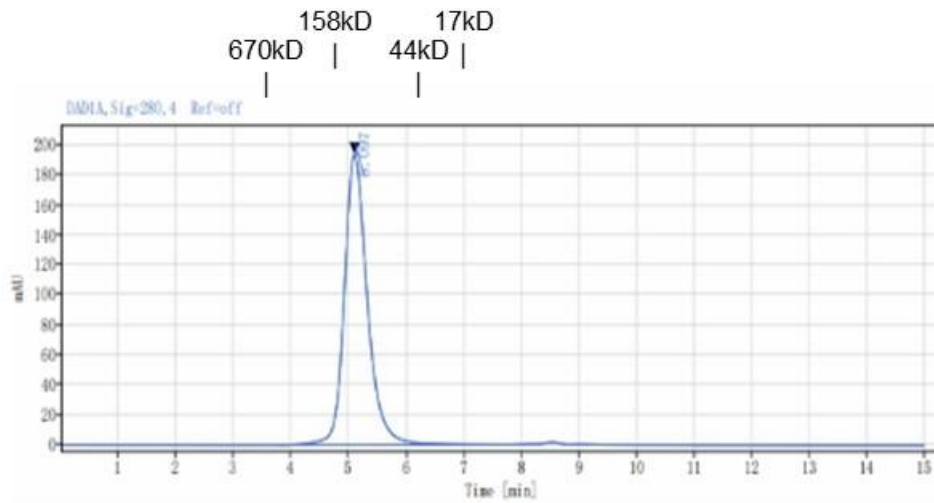
Formulation:	PBS, pH 7.4
Storage and handling:	Store at -80°C. Avoid multiple freeze-thaw cycles.

Assay Data

SDS-PAGE



SEC-HPLC



Signal: DAD1A, Sig=280, 4 Ref=off

RT[<i>min</i>]	Width[<i>min</i>]	Area	Height	Area%
5.097	3.91	5426.24	193.81	100.00
SUM	3.91	5426.24		

- For Research Use Only. Not for use in diagnostic procedures.

Bioactivity