

Guselkumab

Cat. No.

Product information

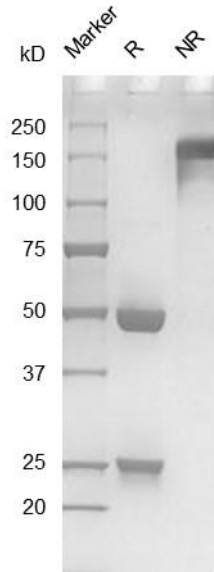
Isotype:	hIgG1
Source:	CHO-K1
Extinction Coefficient:	1.786
AA MW:	144kD
Concentration:	lot specific
Purity:	>95% determined by SDS-PAGE >95% determined by SEC-HPLC
Endotoxin Level:	<1EU/mg determined by LAL method
Sterility:	0.2 μ M filtered

Formulation and Storage

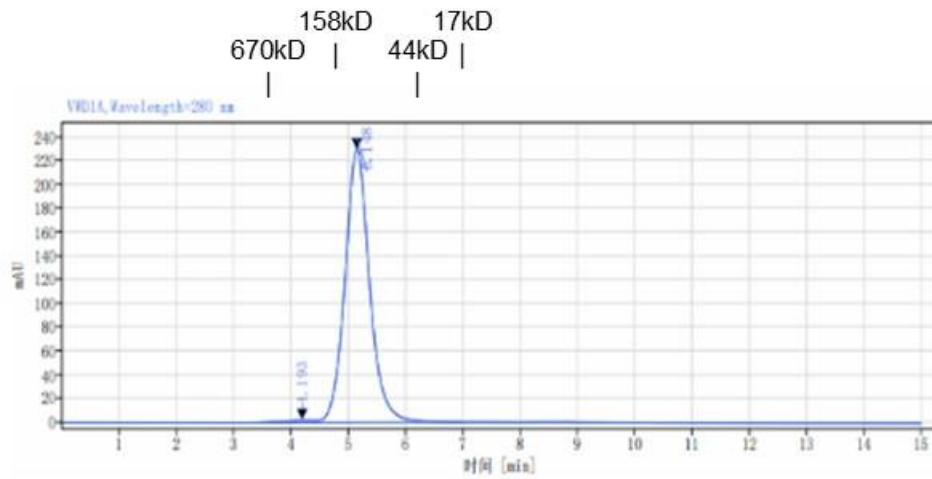
Formulation:	PBS, pH 7.4
Storage and handling:	Store at -80°C. Avoid multiple freeze-thaw cycles.

Assay Data

SDS-PAGE



SEC-HPLC



Signal: VWD1A, Wavelength=280 nm

RT[min]	Width[min]	Area	Height	Area%
4.193	1.21	74.19	2.18	1.07
5.148	2.55	6887.65	229.31	98.93
SUM	3.76	6961.84		

- For Research Use Only. Not for use in diagnostic procedures.

Bioactivity