

## Lanadelumab

Cat. No.

### Product information

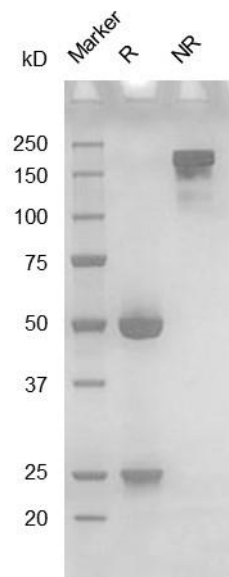
<b>Isotype:</b>	hIgG1
<b>Source:</b>	CHO-K1
<b>Extinction Coefficient:</b>	1.513
<b>AA MW:</b>	146kD
<b>Concentration:</b>	lot specific
<b>Purity:</b>	>95% determined by SDS-PAGE >95% determined by SEC-HPLC
<b>Endotoxin Level:</b>	<1EU/mg determined by LAL method
<b>Sterility:</b>	0.2 $\mu$ M filtered

### Formulation and Storage

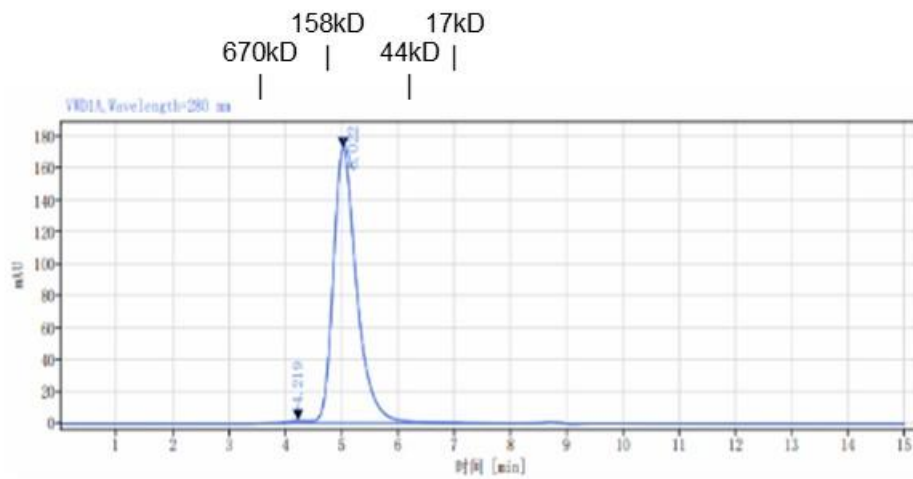
<b>Formulation:</b>	PBS, pH 7.4
<b>Storage and handling:</b>	Store at -80°C. Avoid multiple freeze-thaw cycles.

### Assay Data

## SDS-PAGE



## SEC-HPLC



Signal: WDI1, Wavelength=280 nm

RT[min]	Width[min]	Area	Height	Area%
4.219	0.52	27.31	1.22	0.54
5.022	2.71	4987.98	172.05	99.46
SUM	3.23	5015.29		

- For Research Use Only. Not for use in diagnostic procedures.

## **Bioactivity**