

**Ravulizumab**

**Cat. No.**

**Product information**

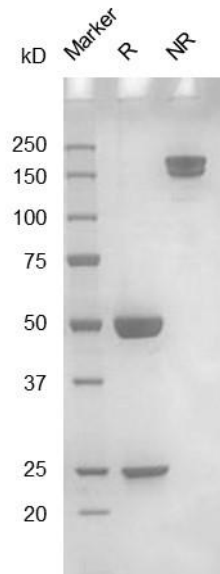
<b>Isotype:</b>	hIgG2/4
<b>Source:</b>	CHO-K1
<b>Extinction Coefficient:</b>	1.478
<b>AA MW:</b>	145kD
<b>Concentration:</b>	lot specific
<b>Purity:</b>	>95% determined by SDS-PAGE >95% determined by SEC-HPLC
<b>Endotoxin Level:</b>	<1EU/mg determined by LAL method
<b>Sterility:</b>	0.2µM filtered

**Formulation and Storage**

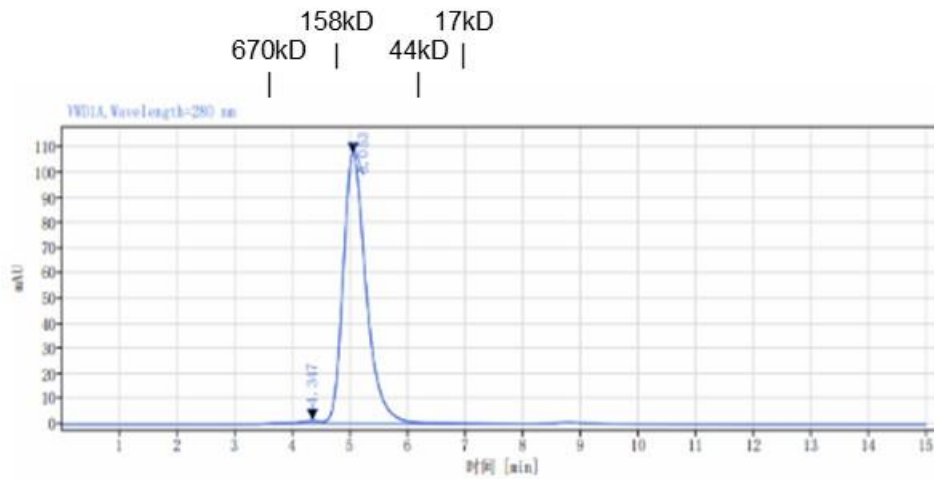
<b>Formulation:</b>	PBS, pH 7.4
<b>Storage and handling:</b>	Store at -80°C. Avoid multiple freeze-thaw cycles.

**Assay Data**

## SDS-PAGE



## SEC-HPLC



Signal: VWD1A, Wavelength=280 nm

RT[ <i>mn</i> ]	Width[ <i>mn</i> ]	Area	Height	Area%
4.347	0.90	32.95	1.22	1.09
5.053	3.41	2998.69	107.16	98.91
SUM	4.30	3031.64		

- For Research Use Only. Not for use in diagnostic procedures.

## **Bioactivity**