

Satralizumab

Cat. No.

Product information

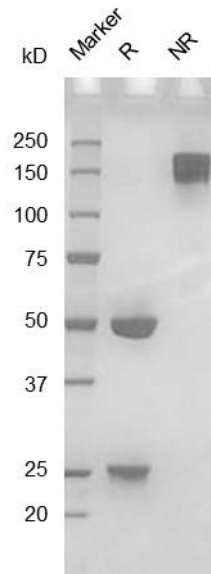
Isotype:	hIgG2
Source:	CHO-K1
Extinction Coefficient:	1.398
AA MW:	143kD
Concentration:	lot specific
Purity:	>95% determined by SDS-PAGE >95% determined by SEC-HPLC
Endotoxin Level:	<1EU/mg determined by LAL method
Sterility:	0.2 μ M filtered

Formulation and Storage

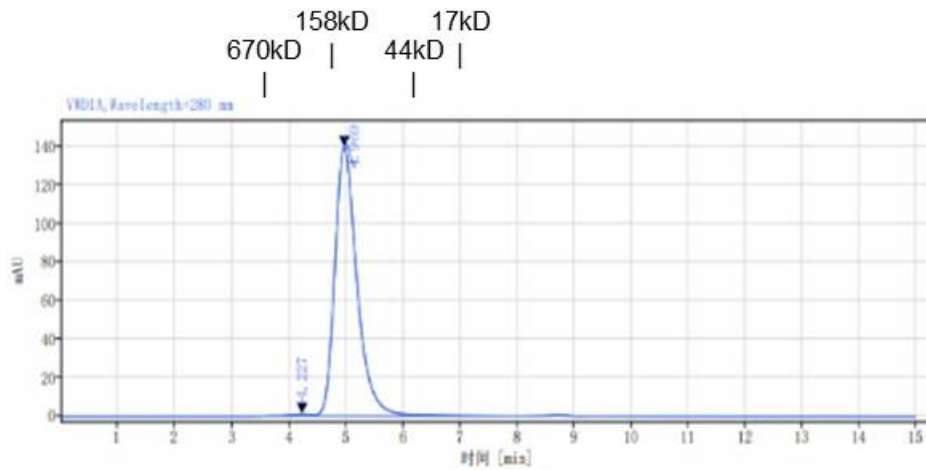
Formulation:	PBS, pH 7.4
Storage and handling:	Store at -80°C. Avoid multiple freeze-thaw cycles.

Assay Data

SDS-PAGE



SEC-HPLC



Signal: VMDIA, Wavelength=280 nm

RT[min]	Width[min]	Area	Height	Area%
4.227	0.57	18.03	0.80	0.47
4.969	3.37	3778.71	139.51	99.53
SUM	3.94	3796.74		

- For Research Use Only. Not for use in diagnostic procedures.

Bioactivity