

Tarlatamab

Cat. No.

Product information

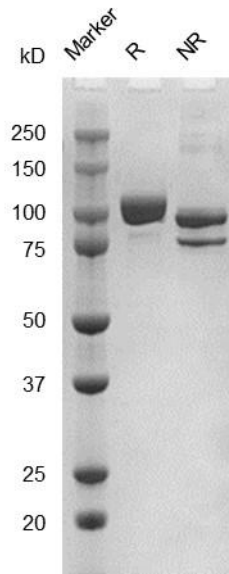
Isotype:	bispecific, hIgG1
Source:	CHO-K1
Extinction Coefficient:	1.755
AA MW:	105kD
Concentration:	lot specific
Purity:	>95% determined by SDS-PAGE >90% determined by SEC-HPLC
Endotoxin Level:	<1EU/mg determined by LAL method
Sterility:	0.2µM filtered

Formulation and Storage

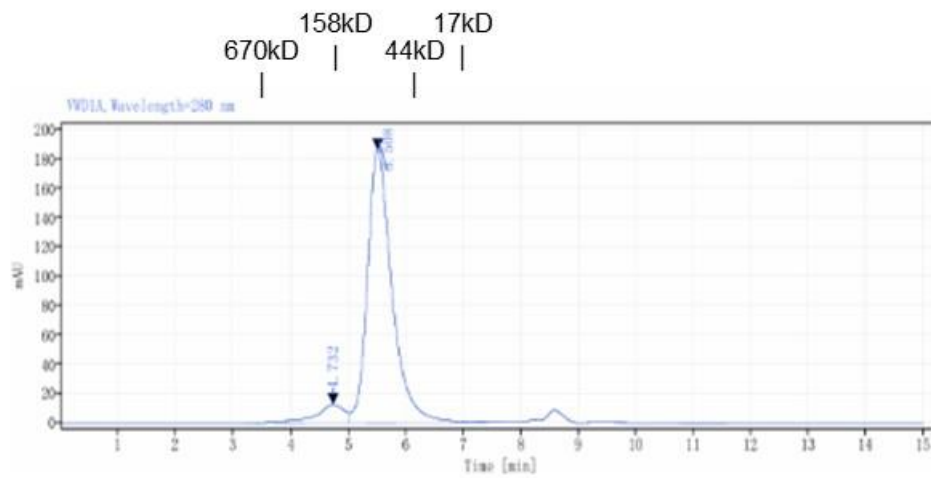
Formulation:	PBS, pH 7.4
Storage and handling:	Store at -80°C. Avoid multiple freeze-thaw cycles.

Assay Data

SDS-PAGE



SEC-HPLC



Signal: WDI1, Wavelength=280 nm

RT[min]	Width[min]	Area	Height	Area%
4.732	1.82	454.23	12.48	7.60
5.508	2.67	5524.13	186.35	92.40
SUM	4.49	5978.36		

- For Research Use Only. Not for use in diagnostic procedures.