

## Zolbetuximab

Cat. No.

### Product information

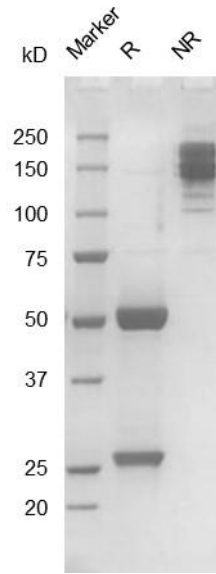
<b>Isotype:</b>	hIgG1
<b>Source:</b>	CHO-K1
<b>Extinction Coefficient:</b>	1.634
<b>AA MW:</b>	147kD
<b>Concentration:</b>	lot specific
<b>Purity:</b>	>95% determined by SDS-PAGE >95% determined by SEC-HPLC
<b>Endotoxin Level:</b>	<1EU/mg determined by LAL method
<b>Sterility:</b>	0.2 $\mu$ M filtered

### Formulation and Storage

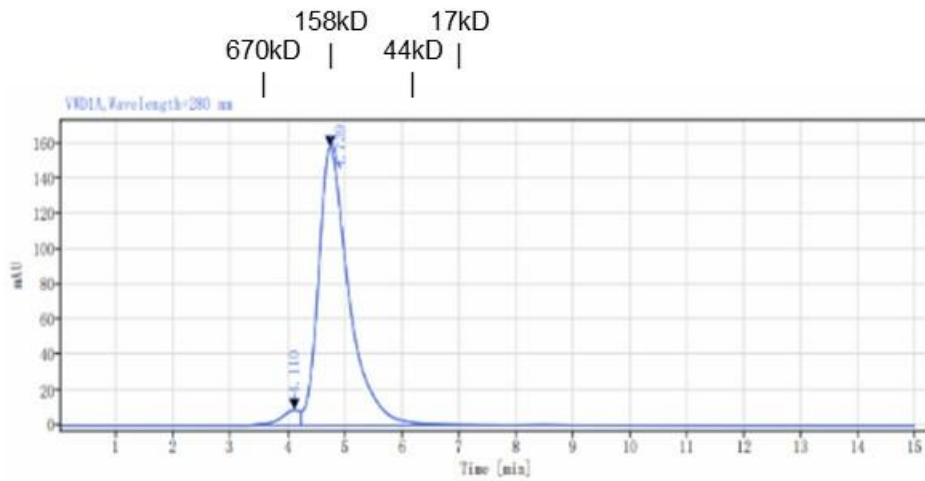
<b>Formulation:</b>	PBS, pH 7.4
<b>Storage and handling:</b>	Store at -80°C. Avoid multiple freeze-thaw cycles.

### Assay Data

## SDS-PAGE



## SEC-HPLC



**Signal:** VWDIA, Wavelength=280 nm

RT[min]	Width[min]	Area	Height	Area%
4.110	1.13	200.89	8.56	3.32
4.739	3.47	5841.65	157.48	96.68
SUM	4.60	6042.55		

- For Research Use Only. Not for use in diagnostic procedures.

## **Bioactivity**