

Mosunetuzumab

Cat. No. BM-bs0020

Product information

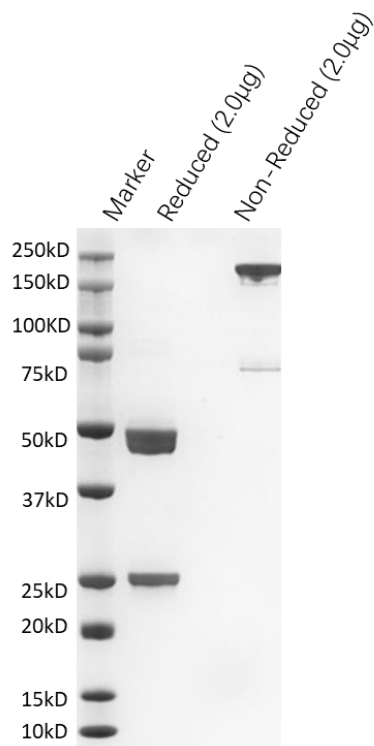
Isotype:	Bispecific, hIgG1, κ
Source:	Mosunetuzumab is expressed from CHOK1
Extinction Coefficient:	234860 M ⁻¹ cm ⁻¹
Molecular Weight:	The protein has a predicted MW of 146.3 kDa.
Concentration:	Lot Specific*
Purity:	>95% Determined by SDS-PAGE >95% Determined by SEC-HPLC
Endotoxin level:	<1EU/mg Determined by LAL method
Sterility:	0.2 μ M filtered

Formulation and Storage

Formulation:	Lyophilized from 0.22 μ m filtered solution in PBS (pH 7.0).
Storage and handling:	Store at -80°C. Avoid multiple freeze-thaw cycles.

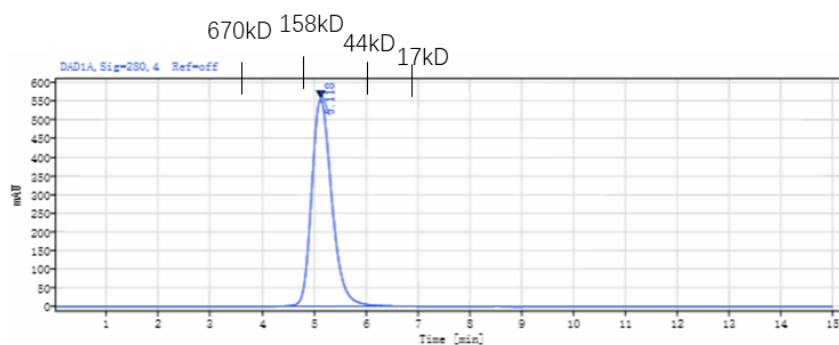
Assay Data

SDS-PAGE



The purified **Mosunetuzumab** on SDS-PAGE under reduced and non-reduced condition.

SEC-HPLC



Signal: DAD1A, Sig=280, 4 Ref=off

RT[min]	Width[min]	Area	Height	Area%
5.118	2.22	15005.06	555.74	100.00
SUM	2.22	15005.06		

The purified **Mosunetuzumab** analyzed by SEC-HPLC.

- For Research Use Only. Not for use in diagnostic procedures.