

Gefurulimab

Cat. No. BM-bs0005

Product information

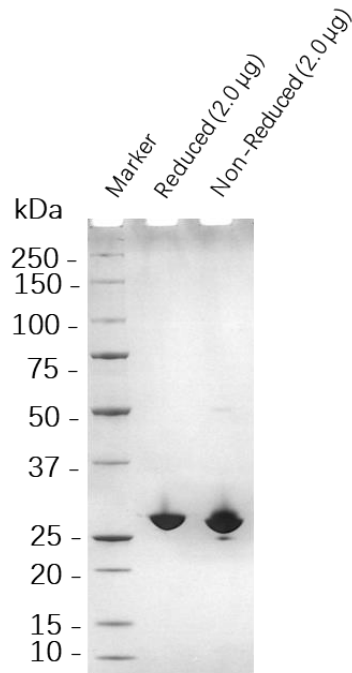
Isotype:	Tandem dAb
Source:	Gefurulimab is expressed from CHO stable cell
Extinction Coefficient:	58580 M ⁻¹ cm ⁻¹
Molecular Weight:	The protein has a predicted MW of 28.2 kDa.
Concentration:	Lot Specific*
Purity:	>95% Determined by SDS-PAGE >95% Determined by SEC-HPLC
Endotoxin level:	<1EU/mg Determined by LAL method
Sterility:	0.2 μM filtered

Formulation and Storage

Formulation:	Lyophilized from 0.22μm filtered solution in PBS (pH 7.0).
Storage and handling:	Store at -80°C. Avoid multiple freeze-thaw cycles.

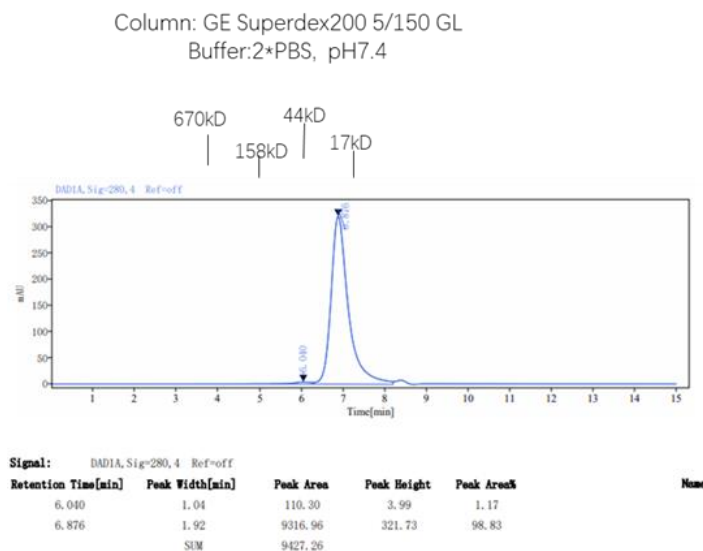
Assay Data

SDS-PAGE



The purified Gefurulimab on SDS-PAGE under reduced and non-reduced condition.

SEC-HPLC



The purified Gefurulimab analyzed by SEC-HPLC.

- For Research Use Only. Not for use in diagnostic procedures.