

Emicizumab

Cat. No. BM-bs0004

Product information

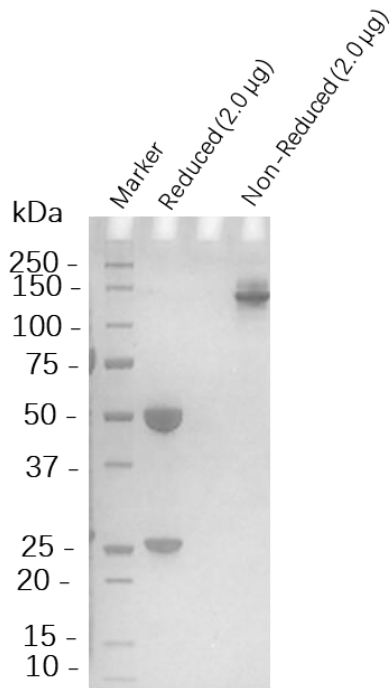
Isotype:	Bispecific, hIgG4, κ
Source:	Emicizumab is expressed from MetaCHO™ Stable pool
Extinction Coefficient:	211370 M ⁻¹ cm ⁻¹
Molecular Weight:	The protein has a predicted MW of 145.7kDa.
Concentration:	Lot Specific*
Purity:	>95% Determined by SDS-PAGE >95% Determined by SEC-HPLC
Endotoxin level:	<1EU/mg Determined by LAL method
Sterility:	0.2 μ M filtered

Formulation and Storage

Formulation:	Lyophilized from 0.22 μ m filtered solution in PBS (pH 7.0).
Storage and handling:	Store at -80°C. Avoid multiple freeze-thaw cycles.

Assay Data

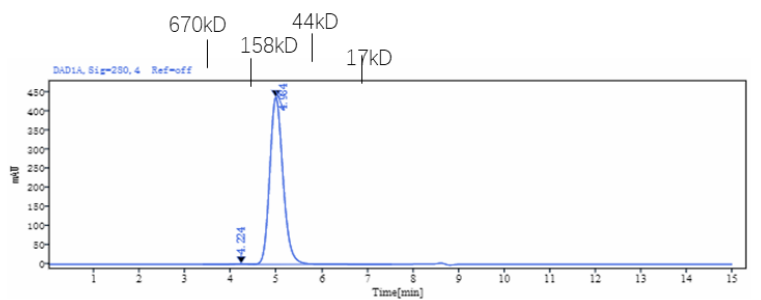
SDS-PAGE



The purified Emicizumab on SDS-PAGE under reduced and non-reduced condition.

SEC-HPLC

Column: GE Superdex200 5/150 GL
Buffer: 2*PBS, pH7.4



Retention Time [min]	Peak Width [min]	Peak Area	Peak Height	Peak Area%	Name
4.224	1.11	47.49	1.91	0.53	
4.984	3.03	8873.55	436.29	99.47	
	SUM	8921.05			

The purified Emicizumab analyzed by SEC-HPLC.

- For Research Use Only. Not for use in diagnostic procedures.