

Cetuximab

Cat. No. BM-Ab010

Product information

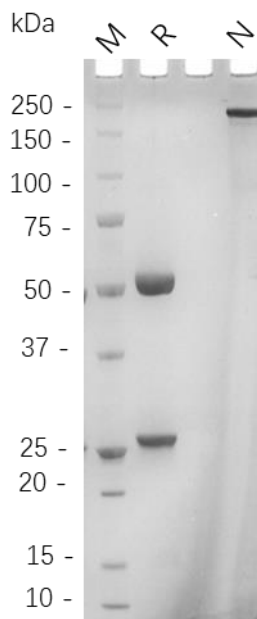
Isotype:	Monoclonal, hIgG1, κ
Source:	Cetuximab is expressed from MetaCHO™ Stable pool
Extinction Coefficient:	217440 M ⁻¹ cm ⁻¹
Molecular Weight:	The protein has a predicted MW of 145.6kDa.
Concentration:	Lot Specific*
Purity:	>95% Determined by SDS-PAGE >95% Determined by SEC-HPLC
Endotoxin level:	<1EU/mg Determined by LAL method
Sterility:	0.2 μ M filtered

Formulation and Storage

Formulation:	Lyophilized from 0.22 μ m filtered solution in PBS (pH 7.4).
Storage and handling:	Store at -80°C. Avoid multiple freeze-thaw cycles.

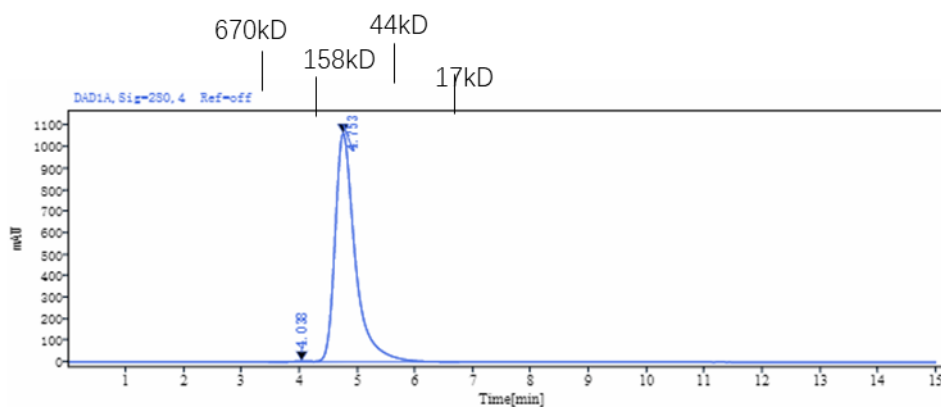
Assay Data

SDS-PAGE



The purified **Cetuximab** on SDS-PAGE under reduced and non-reduced condition.

SEC-HPLC



Signal: DAD1A, Sig=280, 4 Ref=off

Retention Time[min]	Peak Width[min]	Peak Area	Peak Height	Peak Area%	Name
4.038	0.77	77.60	3.68	0.30	
4.753	2.50	25741.01	1063.05	99.70	
	SUM	25818.61			

The purified **Cetuximab** analyzed by SEC-HPLC.

- For Research Use Only. Not for use in diagnostic procedures.