

## Blinatumomab

Cat. No. BM-bs0002

### Product information

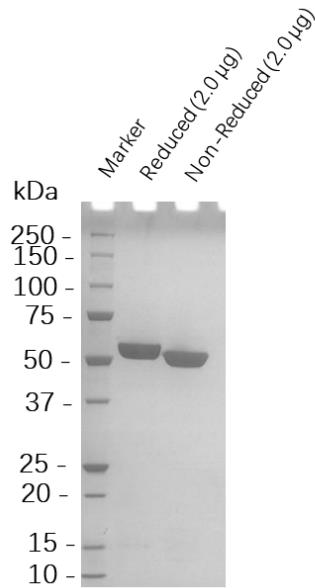
<b>Isotype:</b>	Tandem scFv
<b>Source:</b>	<b>Blinatumomab</b> is expressed from CHO stable cell with His tag at the C-terminal
<b>Extinction Coefficient:</b>	121170 M <sup>-1</sup> cm <sup>-1</sup>
<b>Molecular Weight:</b>	The protein has a predicted MW of 54. 1kDa.
<b>Concentration:</b>	Lot Specific*
<b>Purity:</b>	>95% Determined by SDS-PAGE >95% Determined by SEC-HPLC
<b>Endotoxin level:</b>	<1EU/mg Determined by LAL method
<b>Sterility:</b>	0.2 μM filtered

### Formulation and Storage

<b>Formulation:</b>	Lyophilized from 0.22μm filtered solution in PBS (pH 7.0).
<b>Storage and handling:</b>	Store at -80°C. Avoid multiple freeze-thaw cycles.

### Assay Data

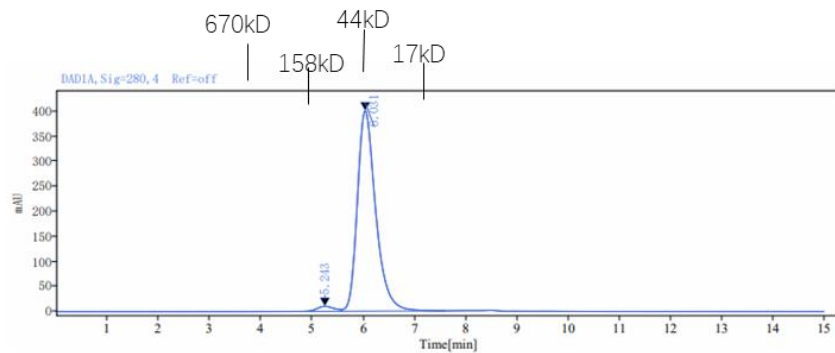
## SDS-PAGE



The purified Blinatumomab on SDS-PAGE under reduced and non-reduced condition.

## SEC-HPLC

Column: GE Superdex200 5/150 GL  
Buffer: 2\*PBS, pH7.4



Signal: DAD1A, Sig=280, 4 Ref=off

Retention Time [min]	Peak Width [min]	Peak Area	Peak Height	Peak Area%	Name
5.243	0.91	229.10	10.01	2.24	
6.031	2.03	9982.87	400.73	97.76	
	SUM	10211.96			

The purified Blinatumomab analyzed by SEC-HPLC.

- For Research Use Only. Not for use in diagnostic procedures.