

## Amivantamab

Cat. No. BM-bs0001

### Product information

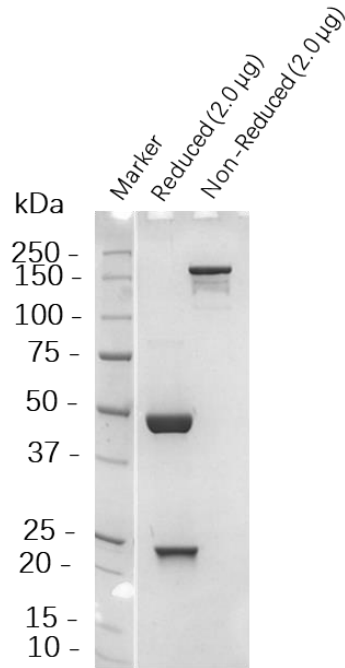
<b>Isotype:</b>	Bispecific, hIgG1, $\kappa$
<b>Source:</b>	<b>Amivantamab</b> is expressed from MetaCHO™ Stable pool
<b>Extinction Coefficient:</b>	216410 M <sup>-1</sup> cm <sup>-1</sup>
<b>Molecular Weight:</b>	The protein has a predicted MW of 145.9kDa.
<b>Concentration:</b>	Lot Specific*
<b>Purity:</b>	>95% Determined by SDS-PAGE >95% Determined by SEC-HPLC
<b>Endotoxin level:</b>	<1EU/mg Determined by LAL method
<b>Sterility:</b>	0.2 $\mu$ M filtered

### Formulation and Storage

<b>Formulation:</b>	Lyophilized from 0.22 $\mu$ m filtered solution in PBS (pH 7.0).
<b>Storage and handling:</b>	Store at -80°C. Avoid multiple freeze-thaw cycles.

### Assay Data

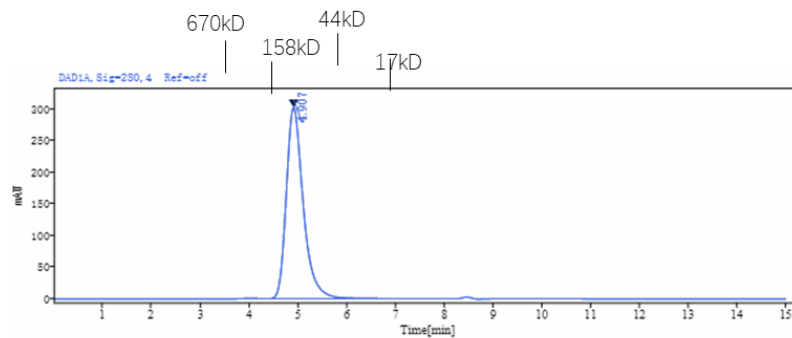
## SDS-PAGE



The purified **Amivantamab** on SDS-PAGE under reduced and non-reduced condition.

## SEC-HPLC

Column: GE Superdex200 5/150 GL  
Buffer: 2\*PBS, pH7.4



Retention Time [min]	Peak Width [min]	Peak Area	Peak Height	Peak Area%	Name
4.907	3.03	7318.36	303.08	100.00	
SUM		7318.36			

The purified **Amivantamab** analyzed by SEC-HPLC.

- For Research Use Only. Not for use in diagnostic procedures.