

10F.9G2-ratIgG2b

Cat. No.

Product information

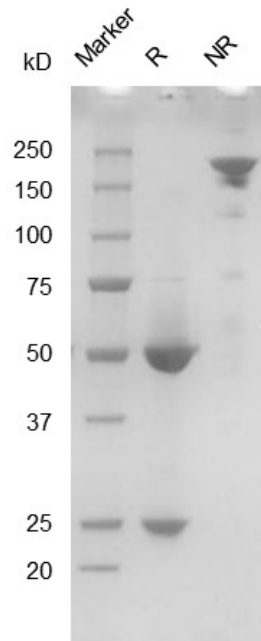
Isotype:	ratIgG2b
Source:	CHO-K1
Extinction Coefficient:	1.355
AA MW:	145kD
Concentration:	lot specific
Purity:	>95% determined by SDS-PAGE >95% determined by SEC-HPLC
Endotoxin Level:	<1EU/mg determined by LAL method
Sterility:	0.2 μ M filtered

Formulation and Storage

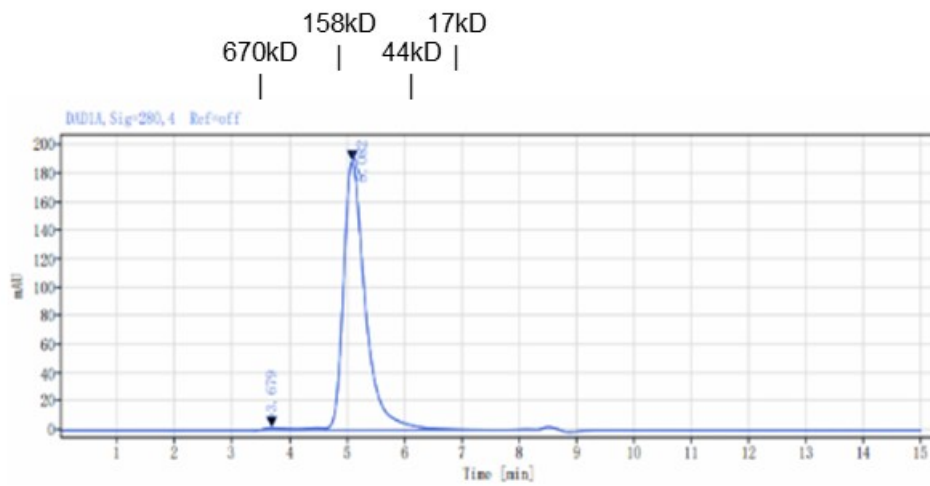
Formulation:	PBS, pH 7.4
Storage and handling:	Store at -80°C. Avoid multiple freeze-thaw cycles.

Assay Data

SDS-PAGE



SEC-HPLC



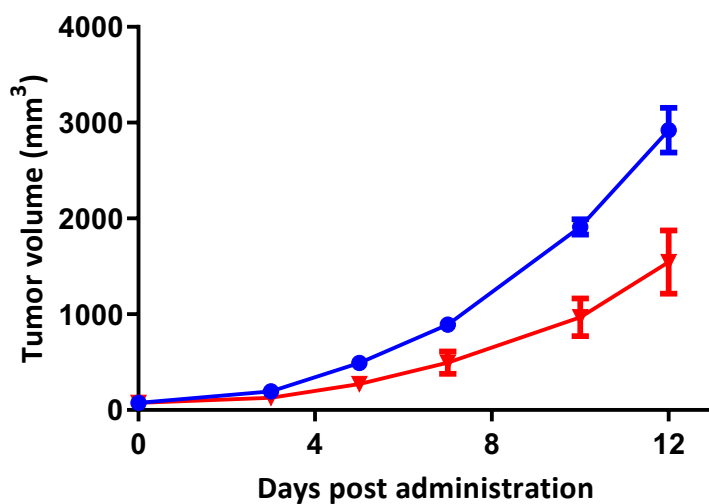
Signal: D01A, Sig-280, 4 Ref=off

RT[min]	Width(min)	Area	Height	Area%
3.679	1.27	79.63	1.60	1.57
5.082	2.93	4979.66	188.42	98.43
SUM	4.20	5059.29		

- For Research Use Only. Not for use in diagnostic procedures.

Bioactivity

Tumor growth



The colorectal carcinoma cells (MC38) were subcutaneously injected into right flank of C57BL/6 mice. Once the average tumor volume reached approximately 80 mm³, the mice were randomly assigned to different treatment groups. They received either vehicle (control) or anti-mPDL-1 (10 mg/kg) twice a week.