

**glofitamab**

**Cat. No.**

### **Product information**

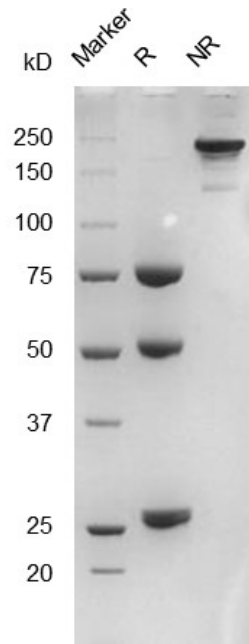
|                                |  |
|--------------------------------|--|
| <b>Isotype:</b>                | bispecific, hIgG1, hKappa                                  |
| <b>Source:</b>                 | CHO stable pool  |
| <b>Extinction Coefficient:</b> | 1.659  |
| <b>AA MW:</b>                  | 194kD  |
| <b>Concentration:</b>          | lot specific   |
| <b>Purity:</b>                 | >95% determined by SDS-PAGE<br>>95% determined by SEC-HPLC |
| <b>Endotoxin Level:</b>        | <1EU/mg determined by LAL method                           |
| <b>Sterility:</b>              | 0.2µM filtered   |

### **Formulation and Storage**

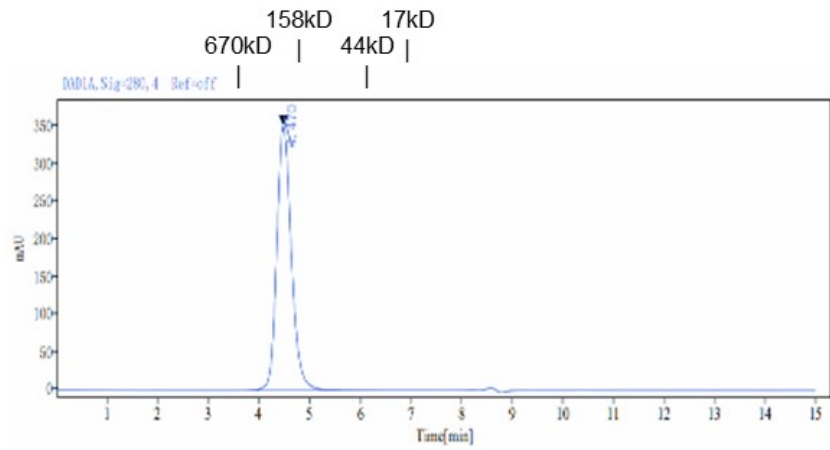
|                              |  |
|------------------------------|--|
| <b>Formulation:</b>          | PBS, pH 7.4  |
| <b>Storage and handling:</b> | Store at -80°C. Avoid multiple freeze-thaw cycles. |

### **Assay Data**

## SDS-PAGE



## SEC-HPLC



Signal: D01A, Sig: 280, 4 Ref: off

| Retention Time [min] | Peak Width [min] | Peak Area | Peak Height | Peak Area% | Name |
|----------------------|------------------|-----------|-------------|------------|------|
| 4.470                | 2.12             | 7035.08   | 350.60      | 100.00     |      |
|                      | SUM              | 7035.08   |             |            |      |

- For Research Use Only. Not for use in diagnostic procedures.