

**epcoritamab**

**Cat. No.**

#### **Product information**

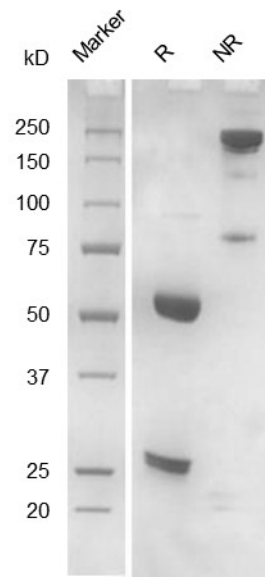
|                                |  |
|--------------------------------|--|
| <b>Isotype:</b>                | bispecific, hIgG1, hKappa                                  |
| <b>Source:</b>                 | CHO stable pool  |
| <b>Extinction Coefficient:</b> | 1.599  |
| <b>AA MW:</b>                  | 146kD  |
| <b>Concentration:</b>          | lot specific   |
| <b>Purity:</b>                 | >95% determined by SDS-PAGE<br>>95% determined by SEC-HPLC |
| <b>Endotoxin Level:</b>        | <1EU/mg determined by LAL method                           |
| <b>Sterility:</b>              | 0.2µM filtered   |

#### **Formulation and Storage**

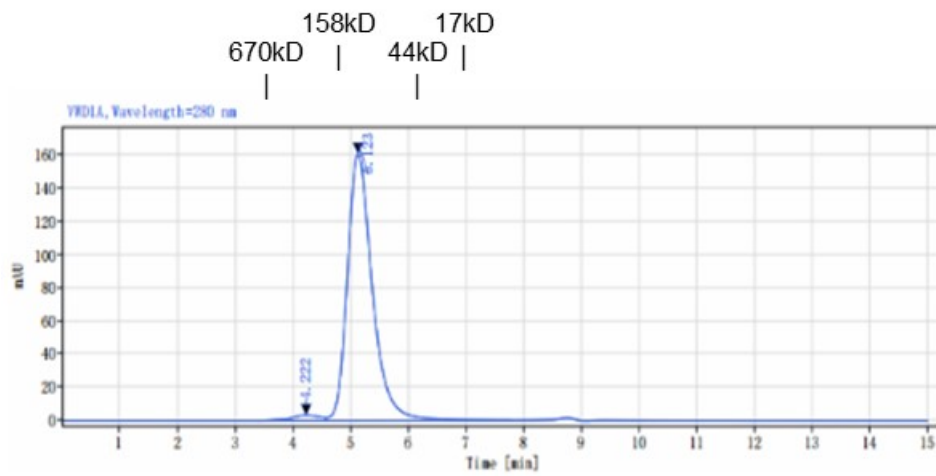
|                              |  |
|------------------------------|--|
| <b>Formulation:</b>          | PBS, pH 7.4  |
| <b>Storage and handling:</b> | Store at -80°C. Avoid multiple freeze-thaw cycles. |

#### **Assay Data**

## SDS-PAGE



## SEC-HPLC



Signal: YWD1A, Wavelength=280 nm

| RT[min] | Width(min) | Area    | Height | Area% |
|---------|------------|---------|--------|-------|
| 4.222   | 1.21       | 111.34  | 3.25   | 2.25  |
| 5.123   | 3.21       | 4842.92 | 161.02 | 97.75 |
| SUM     | 4.42       | 4954.26 |        |       |

- For Research Use Only. Not for use in diagnostic procedures.