

Tislelizumab

Cat. No.

Product information

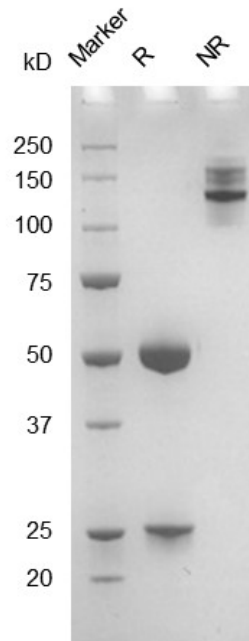
Isotype:	hIgG4
Source:	CHO-K1
Extinction Coefficient:	1.495
AA MW:	144kD
Concentration:	lot specific
Purity:	>95% determined by SDS-PAGE >95% determined by SEC-HPLC
Endotoxin Level:	<1EU/mg determined by LAL method
Sterility:	0.2 μ M filtered

Formulation and Storage

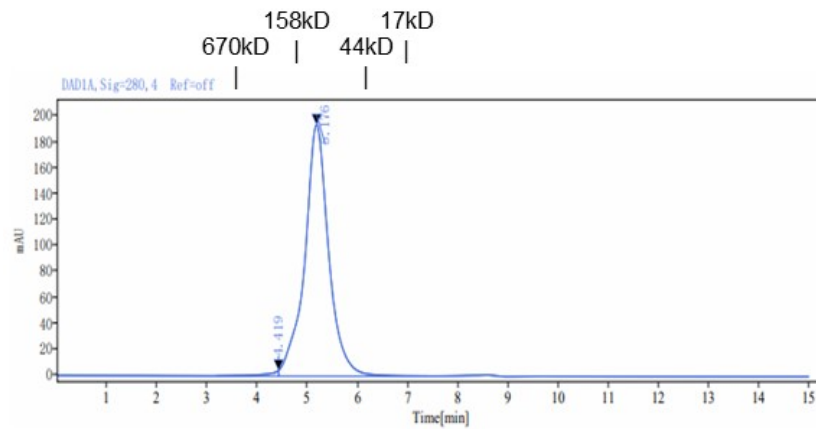
Formulation:	PBS, pH 7.4
Storage and handling:	Store at -80°C. Avoid multiple freeze-thaw cycles.

Assay Data

SDS-PAGE



SEC-HPLC



Signal: DAD1A, Sig=280, 4 Ref=off

Retention Time[min]	Peak Width[min]	Peak Area	Peak Height	Peak Area%	Name
4.419	1.25	61.85	4.32	0.95	
5.176	2.97	6466.62	193.77	99.05	
	SUM	6528.47			

- For Research Use Only. Not for use in diagnostic procedures.

Bioactivity