

Sutimlimab

Cat. No.

Product information

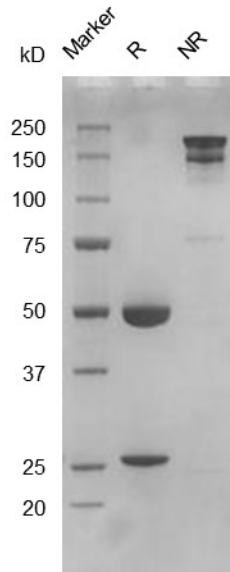
Isotype:	hIgG4
Source:	CHO-K1
Extinction Coefficient:	1.508
AA MW:	145kD
Concentration:	lot specific
Purity:	>95% determined by SDS-PAGE >95% determined by SEC-HPLC
Endotoxin Level:	<1EU/mg determined by LAL method
Sterility:	0.2 μ M filtered

Formulation and Storage

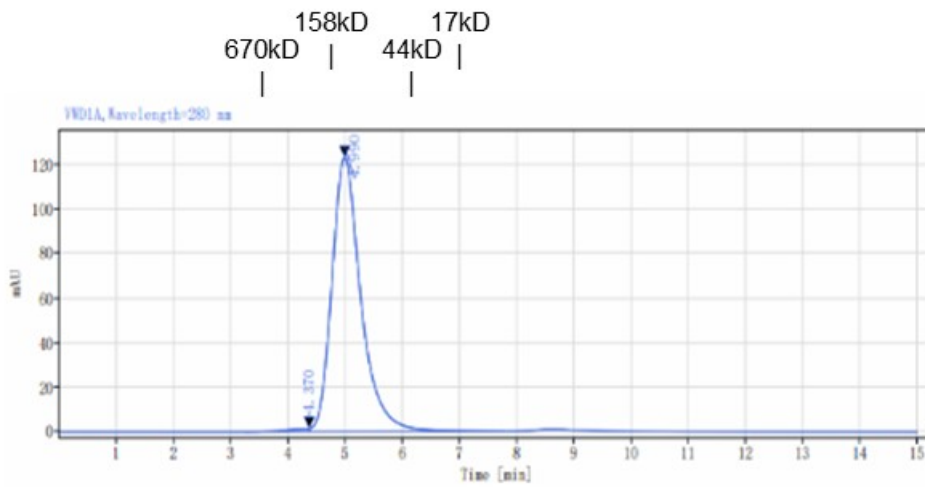
Formulation:	PBS, pH 7.4
Storage and handling:	Store at -80°C. Avoid multiple freeze-thaw cycles.

Assay Data

SDS-PAGE



SEC-HPLC



Signal: VWDIA, Wavelength=280 nm

RT[min]	Width[min]	Area	Height	Area%
4.370	1.13	40.76	1.59	0.92
4.990	3.40	4369.95	123.49	99.08
SUM	4.52	4410.71		

- For Research Use Only. Not for use in diagnostic procedures.

Bioactivity