

sonelokimab

Cat. No.

Product information

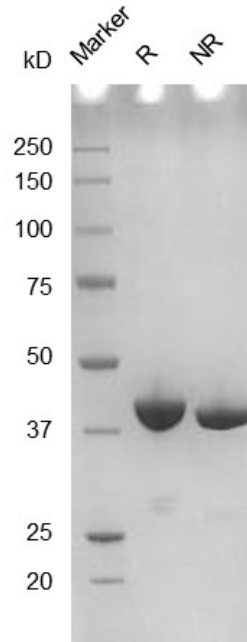
Isotype:	trisppecific
Source:	CHO stable pool
Extinction Coefficient:	1.749
AA MW:	40kD (monomer)
Concentration:	lot specific
Purity:	>95% determined by SDS-PAGE >95% determined by SEC-HPLC
Endotoxin Level:	<1EU/mg determined by LAL method
Sterility:	0.2µM filtered

Formulation and Storage

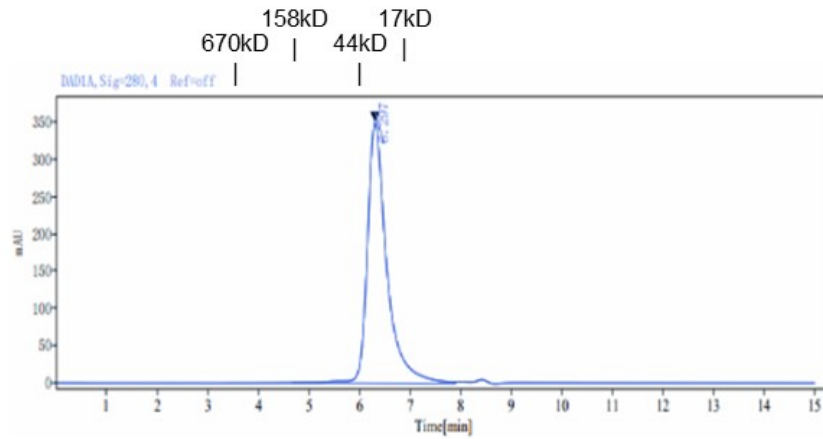
Formulation:	PBS, pH 7.4
Storage and handling:	Store at -80°C. Avoid multiple freeze-thaw cycles.

Assay Data

SDS-PAGE



SEC-HPLC



Signal: DAD1A, Sig=280, 4 Ref=off

Retention Time [min]	Peak Width [min]	Peak Area	Peak Height	Peak Area%	Name
6.297	3.23	9380.74	351.03	100.00	
	SUM	9380.74			

- For Research Use Only. Not for use in diagnostic procedures.