

**Relatlimab**

**Cat. No.**

**Product information**

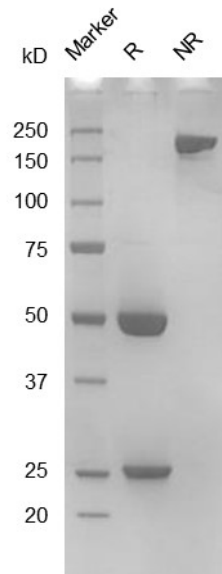
<b>Isotype:</b>	hIgG4
<b>Source:</b>	CHO-K1
<b>Extinction Coefficient:</b>	1.665
<b>AA MW:</b>	146kD
<b>Concentration:</b>	lot specific
<b>Purity:</b>	>95% determined by SDS-PAGE >95% determined by SEC-HPLC
<b>Endotoxin Level:</b>	<1EU/mg determined by LAL method
<b>Sterility:</b>	0.2µM filtered

**Formulation and Storage**

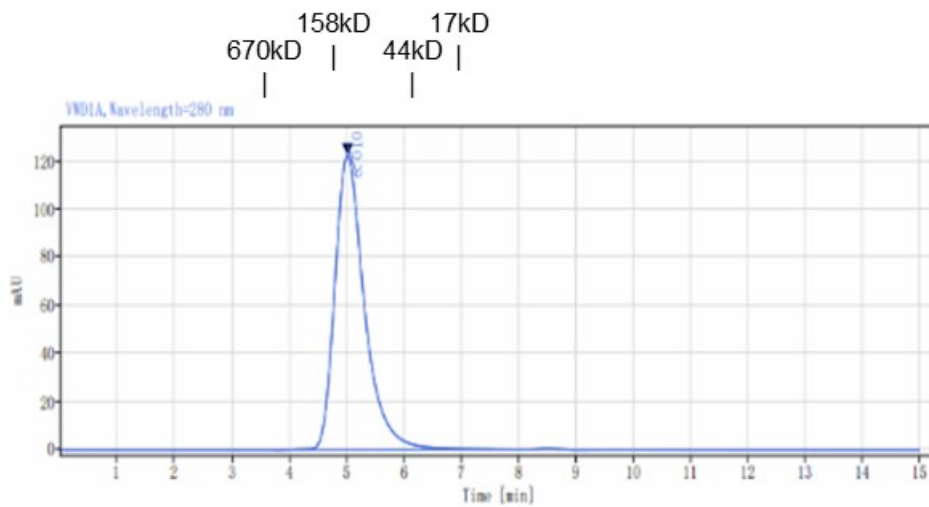
<b>Formulation:</b>	PBS, pH 7.4
<b>Storage and handling:</b>	Store at -80°C. Avoid multiple freeze-thaw cycles.

**Assay Data**

## SDS-PAGE



## SEC-HPLC



Signal: YVD1A, Wavelength=280 nm

RT[min]	Width[min]	Area	Height	Area%
5.010	3.82	4406.84	122.43	100.00
SUM	3.82	4406.84		

- For Research Use Only. Not for use in diagnostic procedures.

## **Bioactivity**